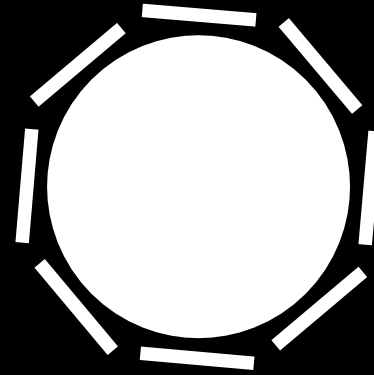




akt II

millimetre
designers and makers ESTD 2006

street assemblies for the square mile



LFA LONDON
FESTIVAL OF
ARCHITECTURE

nla NEW LONDON
ARCHITECTURE



**ALDGATE
CONNEX**

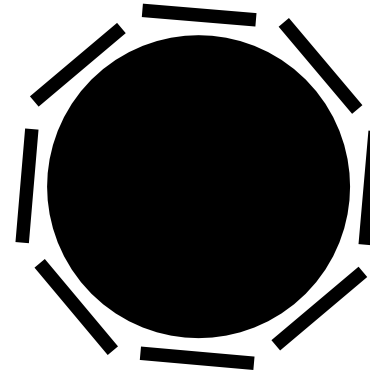
**CULTURE
MILE BID**

EC BUSINESS
IMPROVEME
DISTRICT

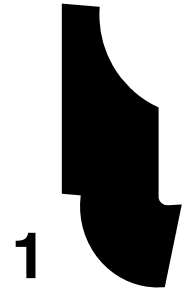
**FLEET
STREET
QUARTER**

“The Street is a room by agreement; a community room, the walls of which belong to the donors.”

– Louis Kahn, architect



3



1



2



4

- 1. Speaker Plinth, Aldgate Connect BID
- 2. Archive Pod, EC BID
- 3. Roundtable, Culture Mile BID
- 4. Assembly, Fleet Street Quarter

What if civic buildings in London's Square Mile transformed from enclosed institutional structures into a horizontal system integrated into the fabric of the streets, opening up and encouraging public participation across discussions on the future of London and its people?

For the 20th anniversary of the London Festival of Architecture, Urban Radicals, supported by AKT II engineers and millimetre fabricators, will re-imagine alternative parliament typologies and forms.

Four public engagement platforms across the City of London aim to make the idea of the "parliament" accessible to a diverse audience, prompting Londoners to actively engage in shaping the city's discourse, while celebrating the multiplicities which exist in Square



Historically focused on trade and guilds, Square Mile has been both a financial and cultural hub for London. Urban Radicals' vision expands the concept of a "Square" to include public squares, markets,

and gatherings, transforming Square Mile into a space for public discussion, equity, knowledge exchange, community, inclusion and ultimately a place for all.

The interventions will test the notion of public assembly across four distinct scales and forms, each of which has been designed to facilitate conversations, from everyday interactions, to cultural podcasts, organised discussions, organised talks, public debates, knowledge exchange workshops, and performances.

Once the LFA comes to an end, the four structures may come together to form a "Mobile Assembly", which will travel across the UK enabling other cities to become connected to what has been initiated in the Square Mile, adding to the project's legacy through enabling more communities to voice, discuss, learn from each other and celebrate together.

Urban Radicals envisions the four interventions becoming spaces for fostering participation in public and community-driven activities, while respecting the Square Mile's historical legacy and positioning it as a prototypical model for sustainable urban development, reflecting the diverse needs of London and its people.

SPEAKERS PLINTH

Aldgate Connect BID
12 Jewry St., London EC3N 2HT

CAPACITY 1 person per plinth, 6 plinths

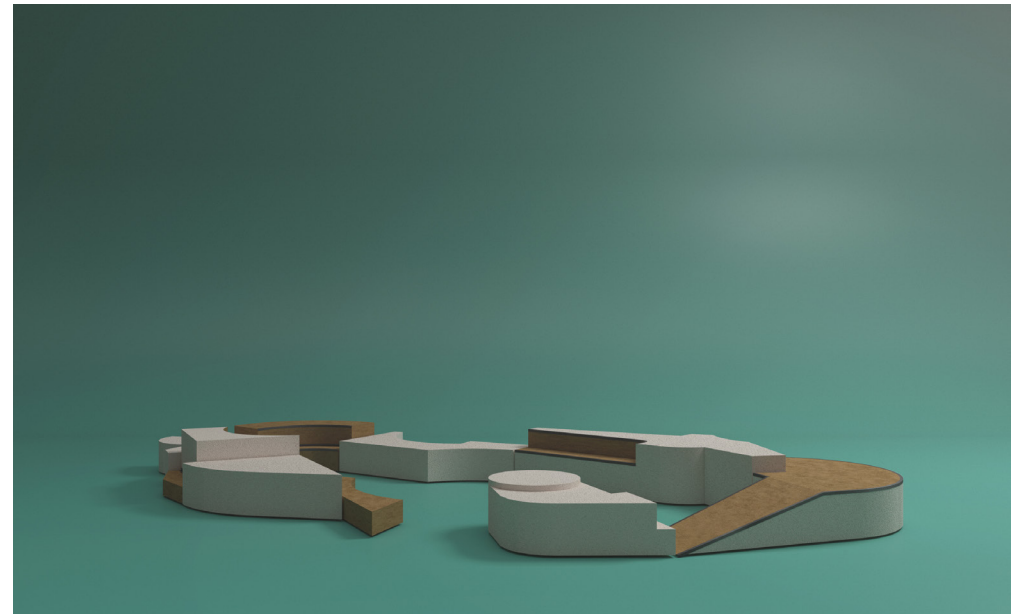
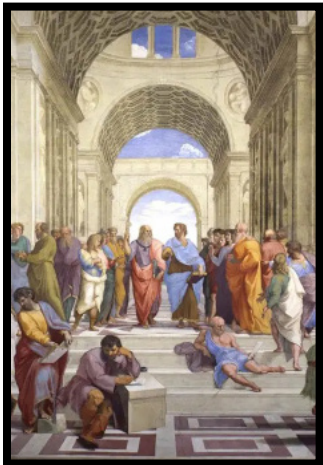
LOCATION DETAILS pedestrianised path, public space

ACCESSIBILITY wheelchair accessible

FLEXIBLE USE the plinths may be repositioned to create different configurations (seek guidance from LFA)

PROVISION N/A

Referencing Aristotle's school of peripatetic philosophy in Ancient Greece ("walk and converse"), a series of small plinths along a stretch on Vine Street adjacent to part of the historic Roman wall, encourage discussions held along a walkable route.



INDIA STREET



U R

Issued to: London Festival of Architecture
 Date: 18.03.2024
 Job name: LFA Square Mile
 Location: 12 Jewry St, London EC3N 2HT
 Drawing title: Speaker Plinth Location Plan
 Dimensions: mm
 Scale: 1:500 @ A4



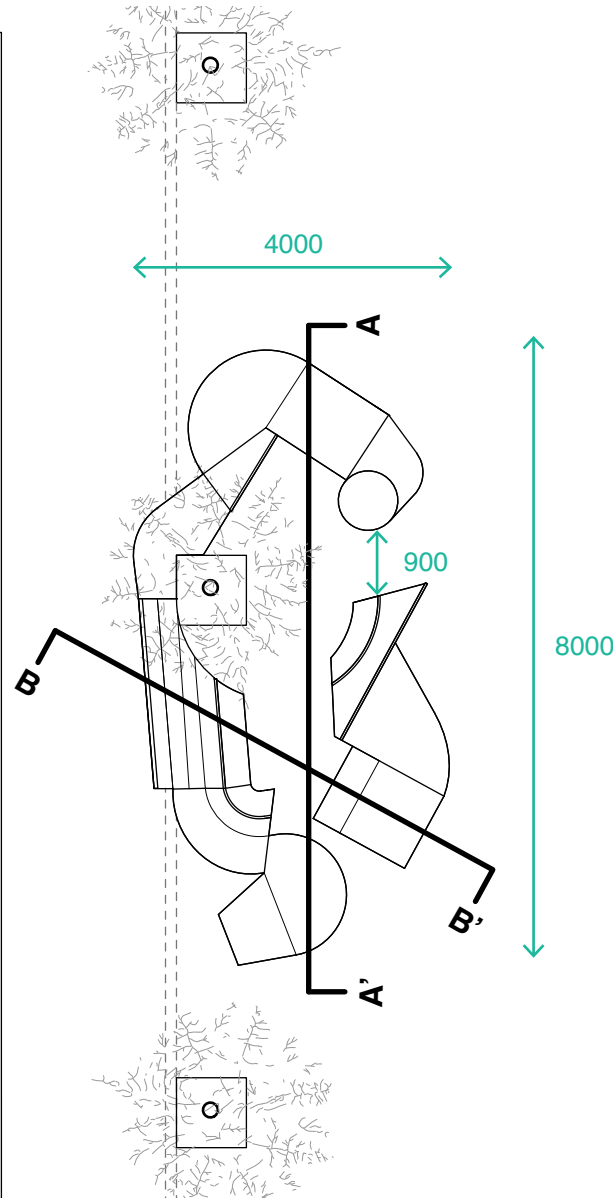
Notes:

1. Dimensions in mm, do not scale.
2. Dimensions are approximate.
3. Form will be refined during development.

This document is the property of 'Urban Radicals LLP' and is not to be used or reproduced in whole or in part without written permission.

Drawn by:

Signed off by:



U R

Issued to: London Festival of Architecture
 Date: 18.03.2024
 Job name: LFA Square Mile
 Location: 12 Jewry St, London EC3N 2HT
 Drawing title: Speaker Plinth Plan
 Dimensions: mm
 Scale: 1:100 @ A4



Notes:

1. Dimensions in mm, do not scale.
2. Dimensions are approximate.
3. Form will be refined during development.

This document is the property of 'Urban Radicals LLP' and is not to be used or reproduced in whole or in part without written permission.

Drawn by:

Signed off by:



U R

Issued to: London Festival of Architecture
 Date: 18.03.2024
 Job name: LFA Square Mile
 Location: 12 Jewry St, London EC3N 2HT
 Drawing title: Speaker Plinth Elevations
 Dimensions: mm
 Scale: 1:100 @ A4

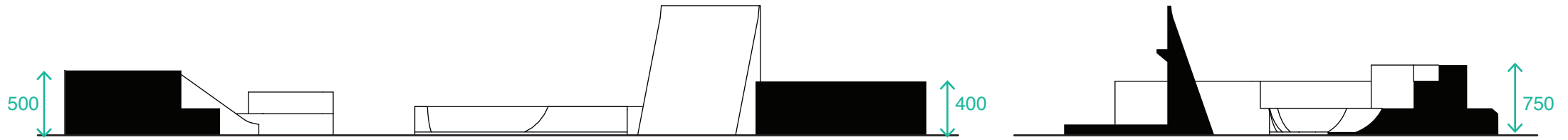
Notes:

1. Dimensions in mm, do not scale.
2. Dimensions are approximate.
3. Form will be refined during development.

This document is the property of 'Urban Radicals LLP' and is not to be used or reproduced in whole or in part without written permission.

Drawn by:

Signed off by:



U R

Issued to: London Festival of Architecture
Date: 18.03.2024
Job name: LFA Square Mile
Location: 12 Jewry St, London EC3N 2HT
Drawing title: Speaker Plinth Sections
Dimensions: mm
Scale: 1:100 @A4

Notes:

1. Dimensions in mm, do not scale.
2. Dimensions are approximate.
3. Form will be refined during development.

This document is the property of 'Urban Radicals LLP' and is not to be used or reproduced in whole or in part without written permission.

Drawn by:

Signed off by:

ARCHIVE POD

Eastern Cluster BID
Viewing Gallery in Horizon 22, 22 Bishopsgate London
EC3N 2HT

CAPACITY 2 people

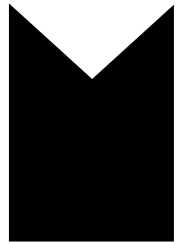
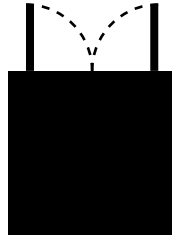
LOCATION DETAILS interior; open to all; free to enter; booking required

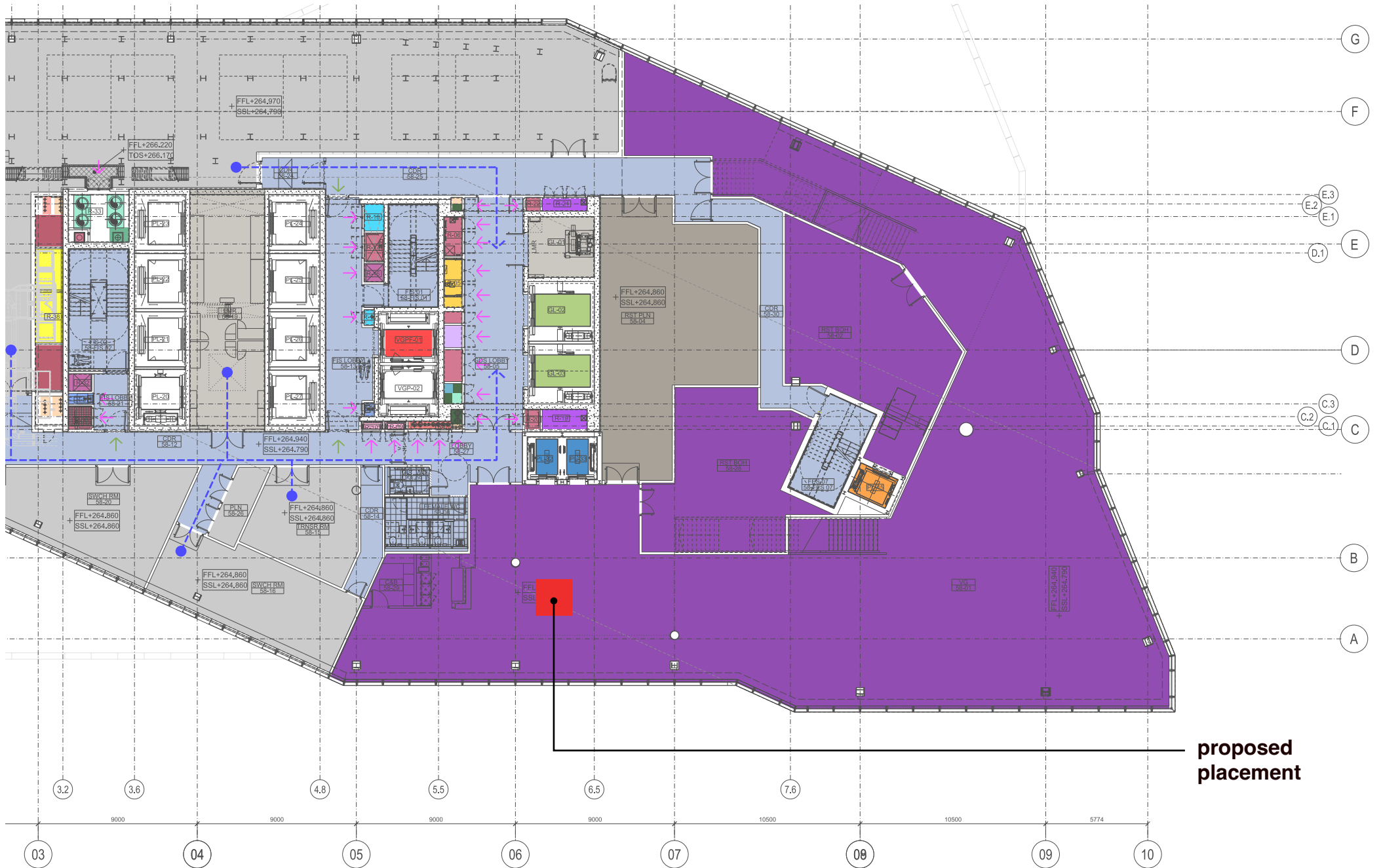
ACCESSIBILITY wheelchair accessible

FLEXIBLE USE exterior showase display open to public; acoustically insulated interior not open to public (see guidance from LFA on accessing the interior for organised event)

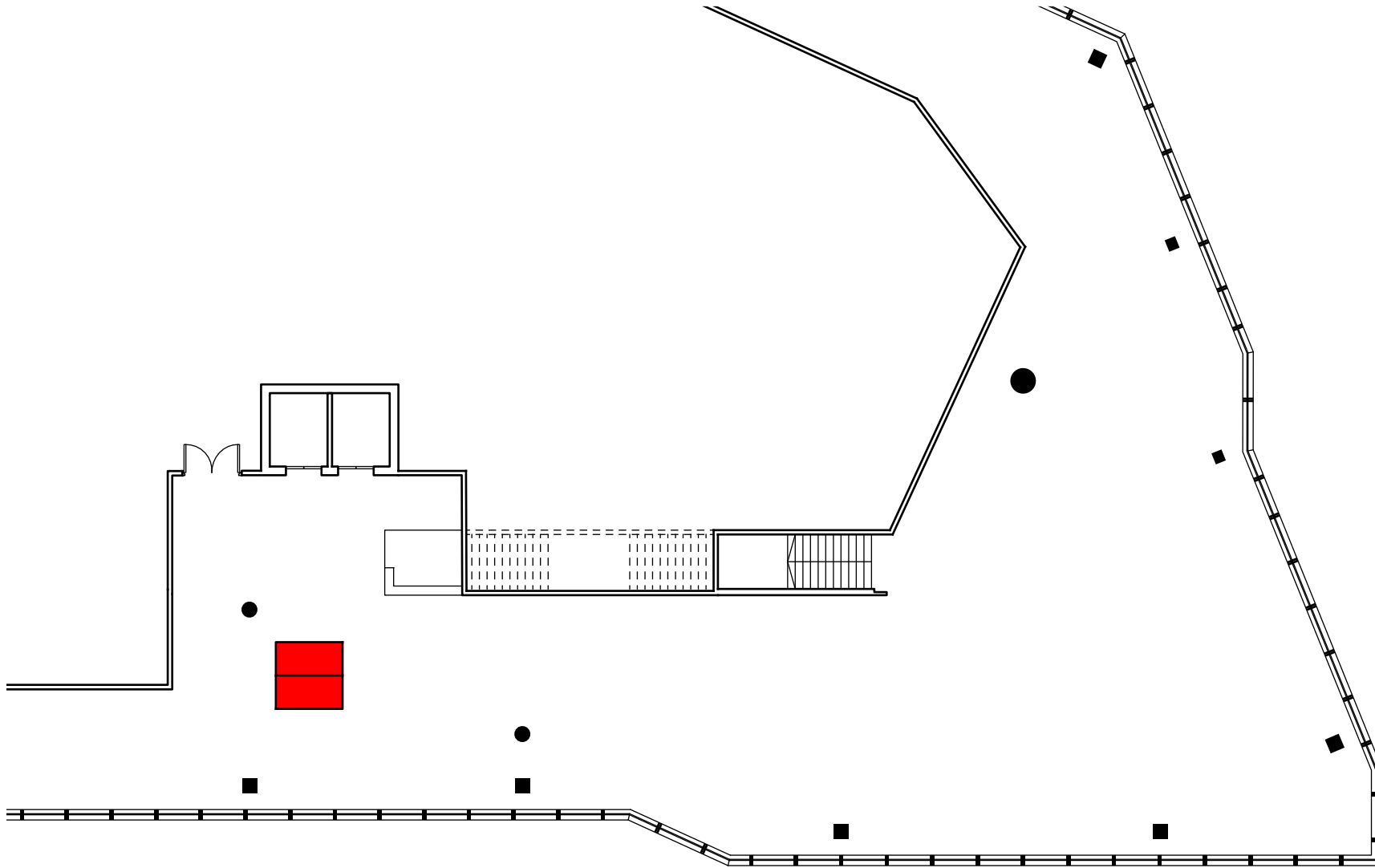
PROVISION access to electricity; potential for live streaming interior activation via public screen in Horizon 22 Viewing Gallery and/or stakeholder socials

A mini seed museum showcasing an archive of seeds historically imported into London, narrating stories of migration and cultural exchange, tying into Square Mile’s history of market and exchange. The intervention will also act as a two-person podcast space for dialogue, interviews, and public broadcasting.





proposed placement



U R

Issued to: London Festival of Architecture
Date: 18.03.2024
Job name: LFA Square Mile
Location: Horizon 22, 22 Bishopsgate, London EC3N 2HT
Drawing title: Archive Pod, Location Plan
Dimensions: mm
Scale: 1:200 @ A4

Notes:

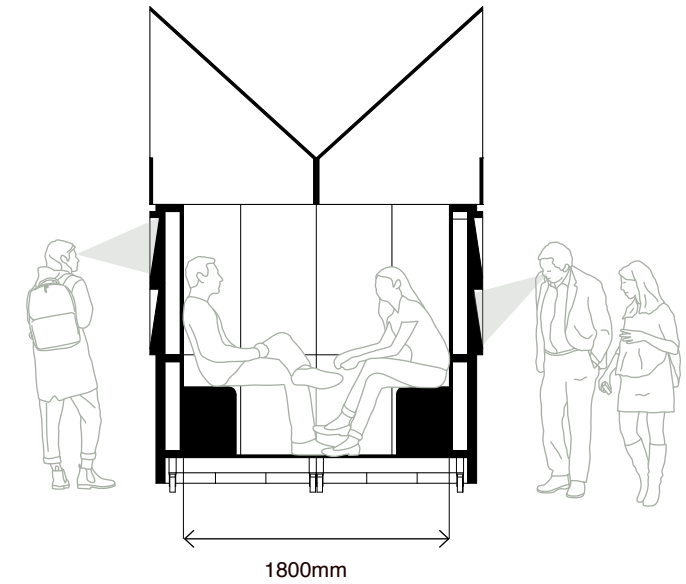
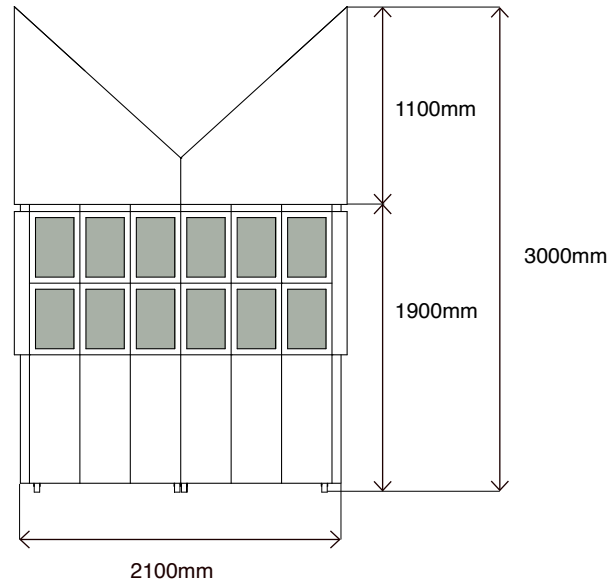
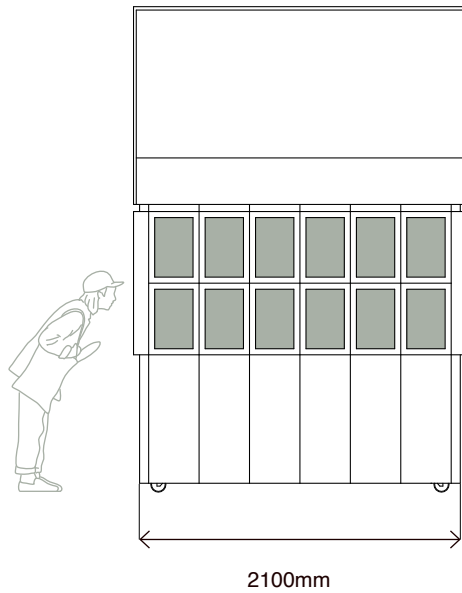
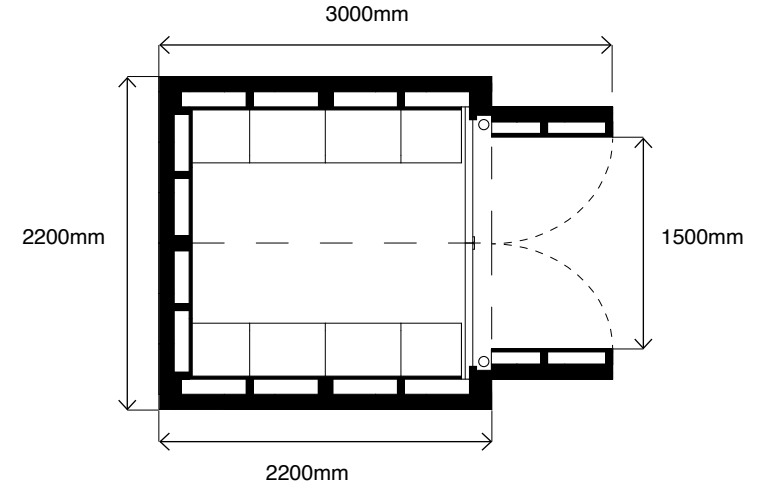
1. Dimensions in mm, do not scale.
2. Dimensions are approximate.
3. Form will be refined during development.

This document is the property of 'Urban Radicals LLP' and is not to be used or reproduced in whole or in part without written permission.

Drawn by:

Signed off by:

Easter Cluster BID: Archive Pod/ GA Drawings



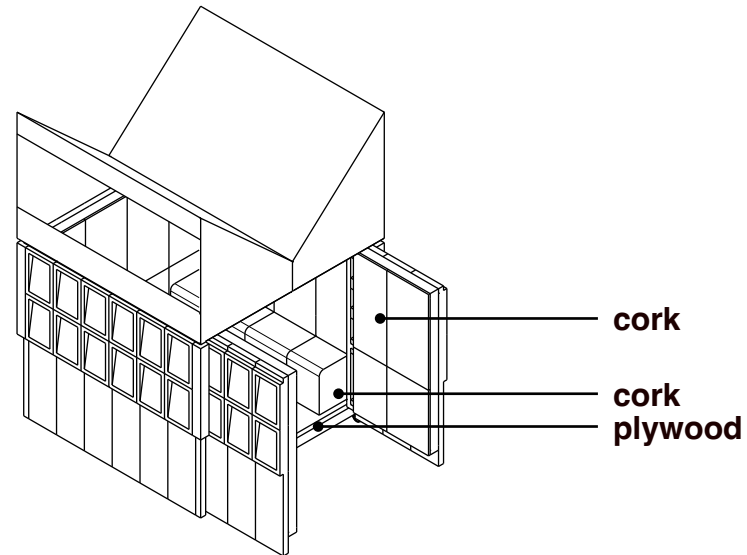
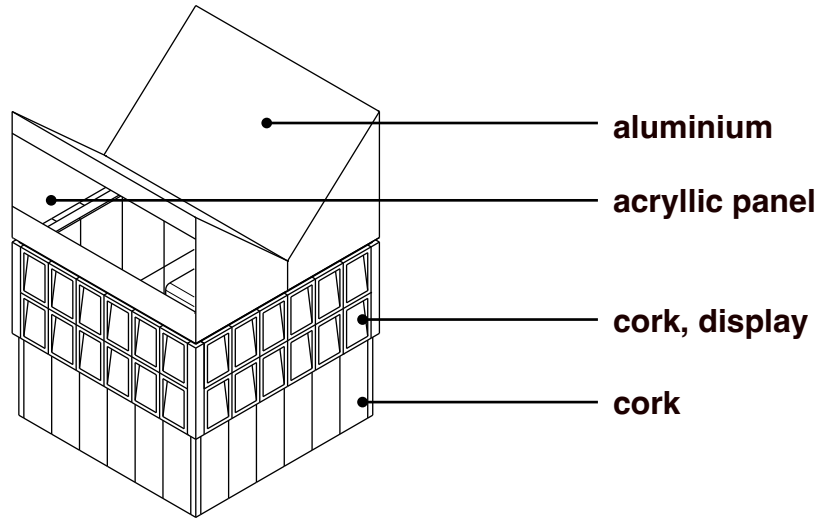
U R

Issued to: London Festival of Architecture
 Date: 21.03.2024
 Job name: LFA Square Mile
 Location: Horizon 22, 22 Bishopsgate, London EC2N 4AJ
 Drawing title: Eastern Culture BID: Archive Pod GA Drawings
 Dimensions: mm
 Scale: 1:50 @ A4

Notes:
 1. Dimensions in mm, do not scale.
 2. Dimensions are approximate.
 3. Form will be refined during development.

Drawn by:
 Signed off by:

Easter Cluster BID: Archive Pod/ Materials



U R

Issued to: London Festival of Architecture
 Date: 18.03.2024
 Job name: LFA Square Mile
 Location: Horizon 22, 22 Bishopsgate, London EC2N 4AJ
 Drawing title: Eastern Culture BID: Archive Pod Isometric Drawings
 Dimensions: mm
 Scale: N/A



Notes:
 1. Dimensions in mm, do not scale.
 2. Dimensions are approximate.
 3. Form will be refined during development.

Drawn by:

 Signed off by:

ROUNDTABLE

Culture Mile BID
 120 London Wall, Moorgate, London EC2Y 5ET

CAPACITY 16 people

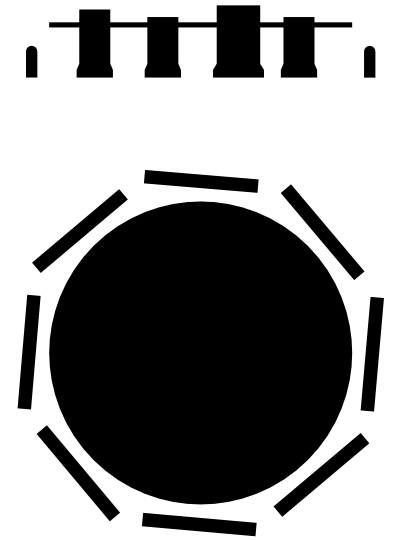
LOCATION DETAILS pedestrianised path, public space

ACCESSIBILITY 8 wheelchair accessible seats on the table

FLEXIBLE USE a public roundtable discussion may be activated via provision of microphone and soundsystem

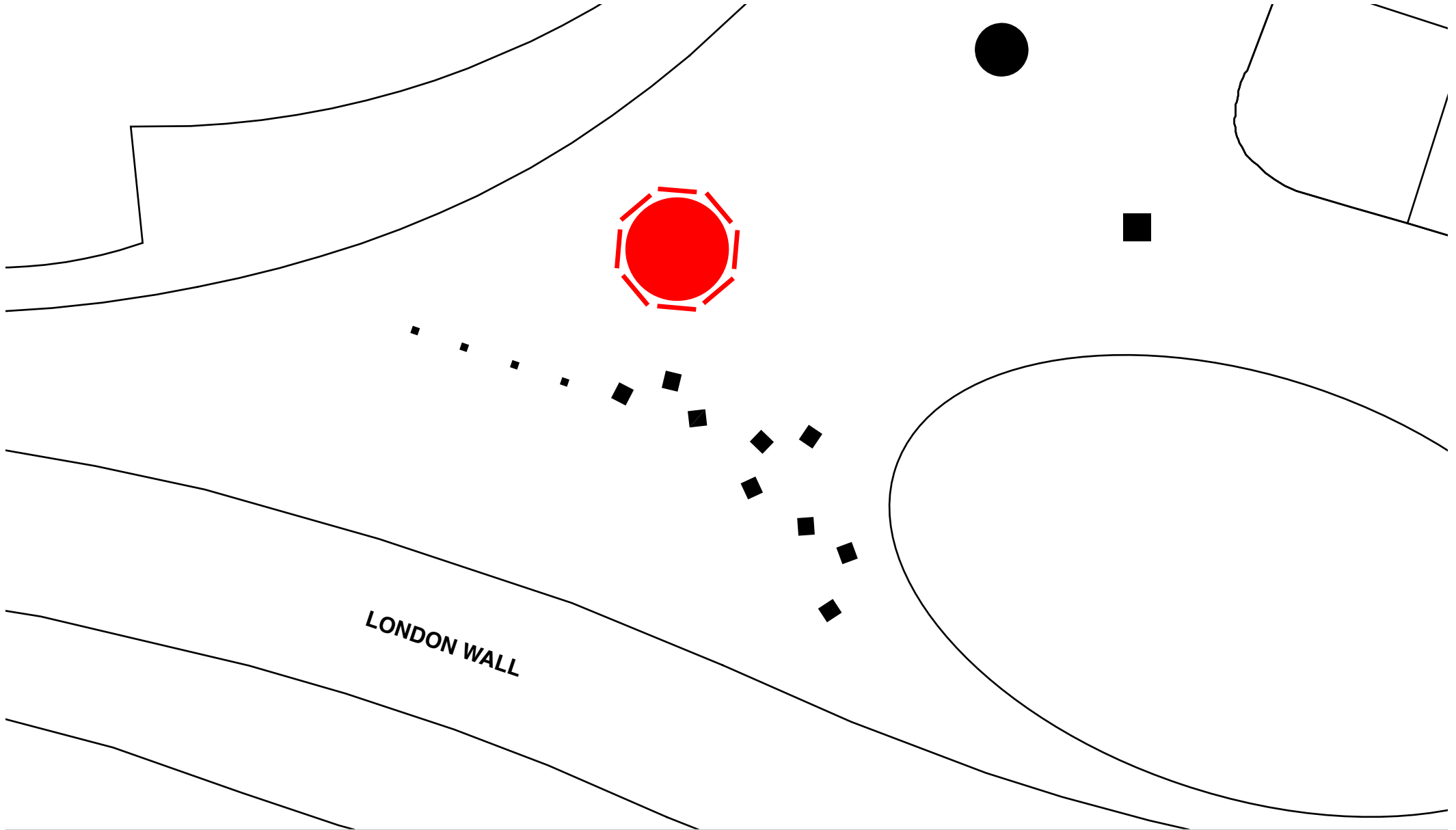
PROVISION access to electricity; LED lighting

Tying together narratives from Smithfield market and the Barbican as a cultural institution, Table 'In the Round' is a roundtable holding 2 programmes: a table for discussion over food that, informally or formally, invites the public to sit down for discussion and deliberation, while also acting as a stage for public performance and roundtable discussions.



Parliament Oak. English parliaments were once convened by this ancient oak tree in the heart of Sherwood Forest.





U R

Issued to: London Festival of Architecture
Date: 18.03.2024
Job name: LFA Square Mile
Location: 120 London Wall, London EC2Y 5ET
Drawing title: Roundtable, Location Plan
Dimensions: mm
Scale: 1:200 @ A4

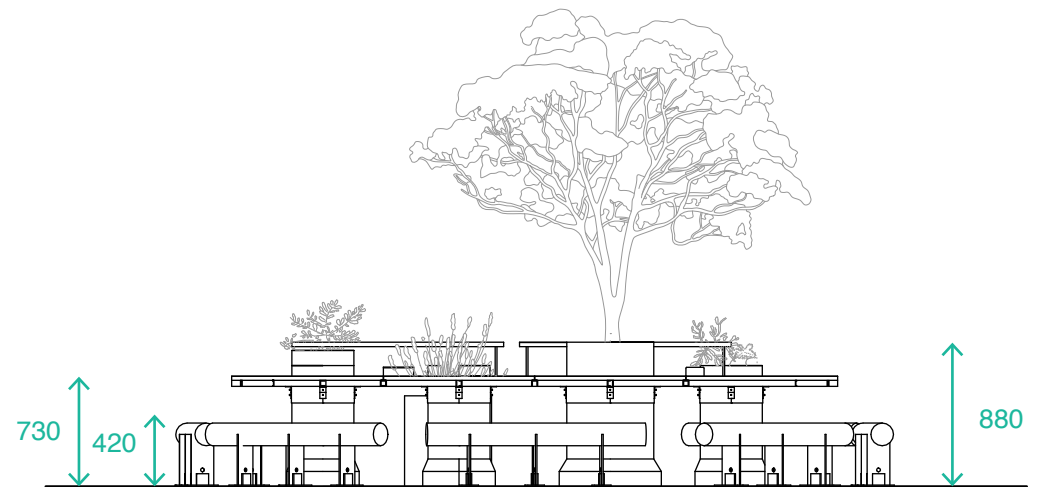
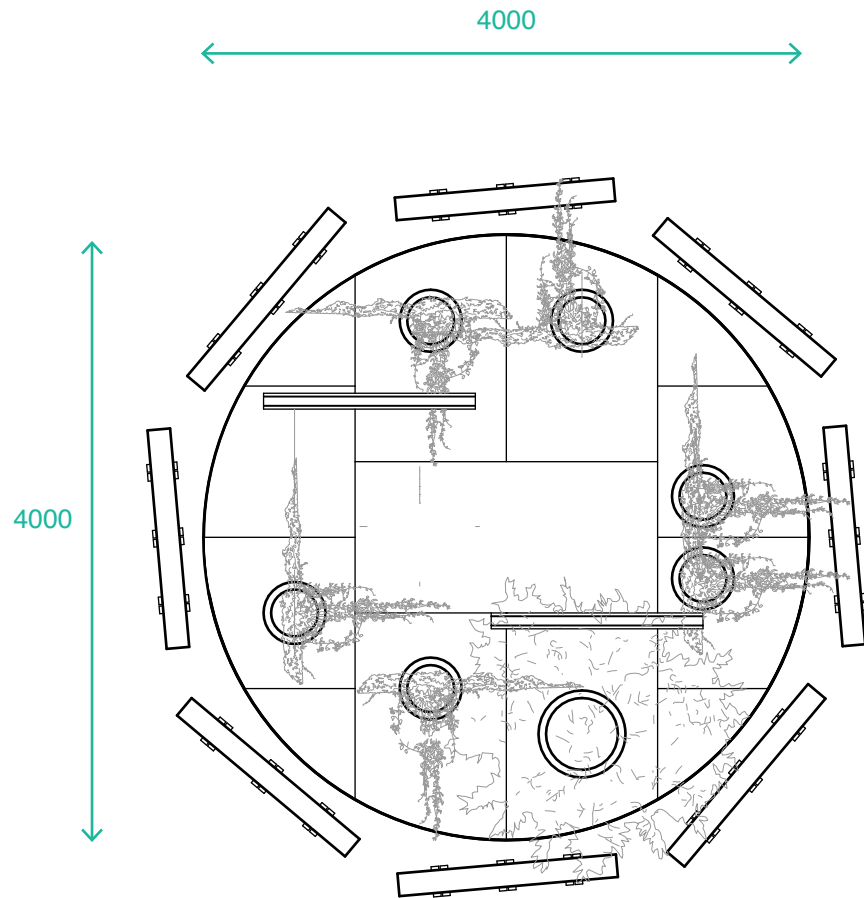
Notes:

- 1. Dimensions in mm, do not scale.
- 2. Dimensions are approximate.
- 3. Form will be refined during development.

This document is the property of 'Urban Radicals LLP' and is not to be used or reproduced in whole or in part without written permission.

Drawn by:

Signed off by:



U R

Issued to: London Festival of Architecture
 Date: 18.03.2024
 Job name: LFA Square Mile
 Location: 120 London Wall, London EC2Y 5ET
 Drawing title: Roundtable, Plan Elevation
 Dimensions: mm
 Scale: 1:100 @ A4

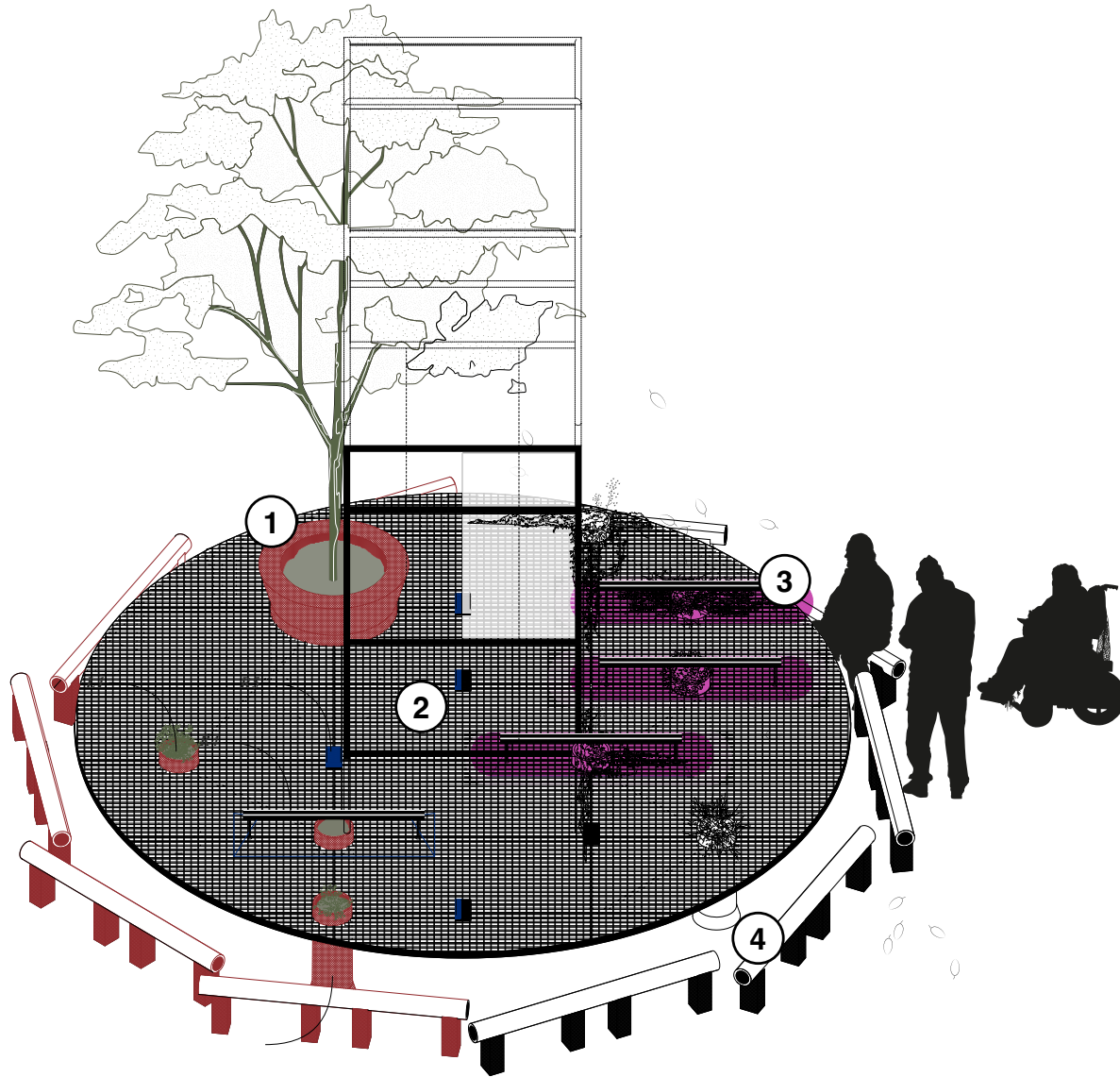
Notes:

1. Dimensions in mm, do not scale.
2. Dimensions are approximate.
3. Form will be refined during development.

This document is the property of 'Urban Radicals LLP' and is not to be used or reproduced in whole or in part without written permission.

Drawn by:

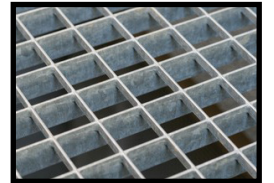
Signed off by:



1. Industrial concrete pipe with planting (tree and climbers)



2. galvanised open steel floor panels



3. LED lighting



4. Tree trunks and cast ballast



ASSEMBLY

Fleet Street Quarter
Playhouse Yard, London EC4V 5EX

CAPACITY 50 people

LOCATION DETAILS pedestrianised path, public space

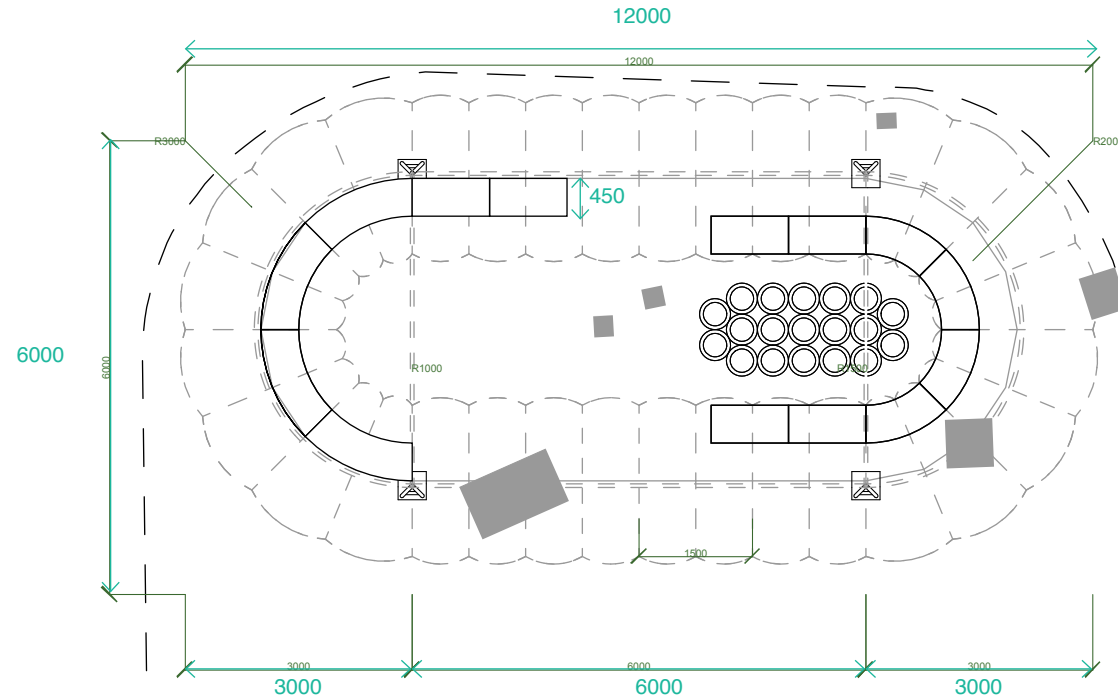
ACCESSIBILITY wheelchair accessible

FLEXIBLE USE auditorium benches may be repositioned to produce different configurations suitable for projector screenings, performances, talks, debates or workshops

PROVISION access to electricity; projector and projector screen; LED lighting

A street auditorium for public debate, discourse, screenings and larger gatherings.





1000mm high inflatable

PLAYHOUSE YARD

U R

Issued to: London Festival of Architecture
 Date: 18.03.2024
 Job name: LFA Square Mile
 Location: Playhouse Yard, 75 Carter Ln., London EC4v 5EX
 Drawing title: Assembly, Plan
 Dimensions: mm
 Scale: 1:100 @ A4



Notes:

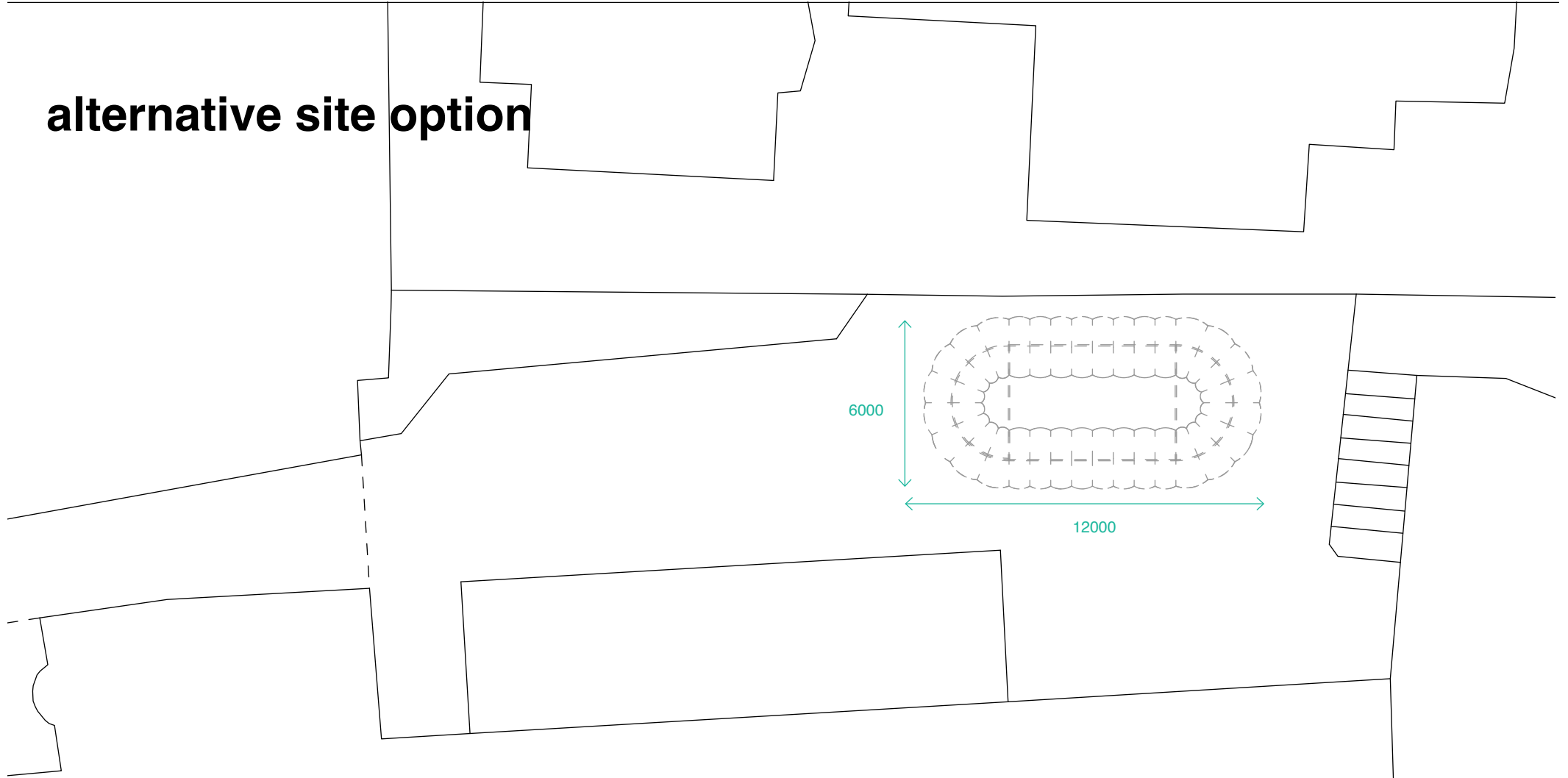
1. Dimensions in mm, do not scale.
2. Dimensions are approximate.
3. Form will be refined during development.

This document is the property of 'Urban Radicals LLP' and is not to be used or reproduced in whole or in part without written permission.

Drawn by:

Signed off by:

alternative site option



ST. BRIDE'S PASSAGE

U R

Issued to: London Festival of Architecture
 Date: 03.04.2024
 Job name: LFA Square Mile
 Location: St. Bride's Passage, London EC4Y 8EJ
 Drawing title: Assembly, Location Plan
 Dimensions: mm
 Scale: 1:200 @ A4



Notes:

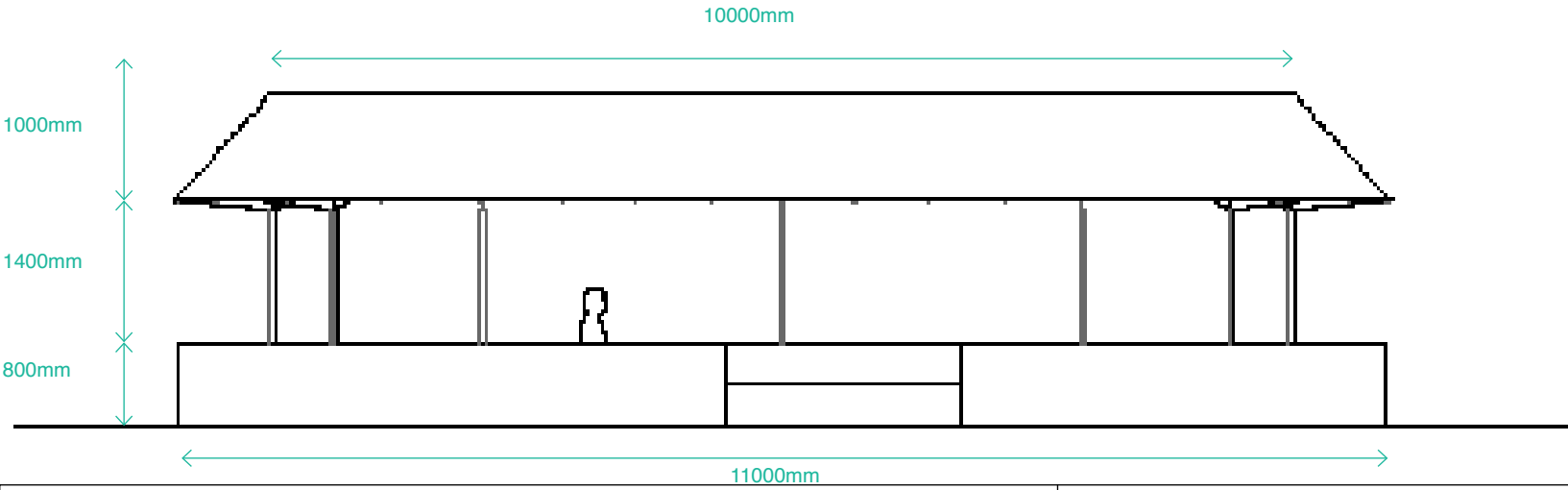
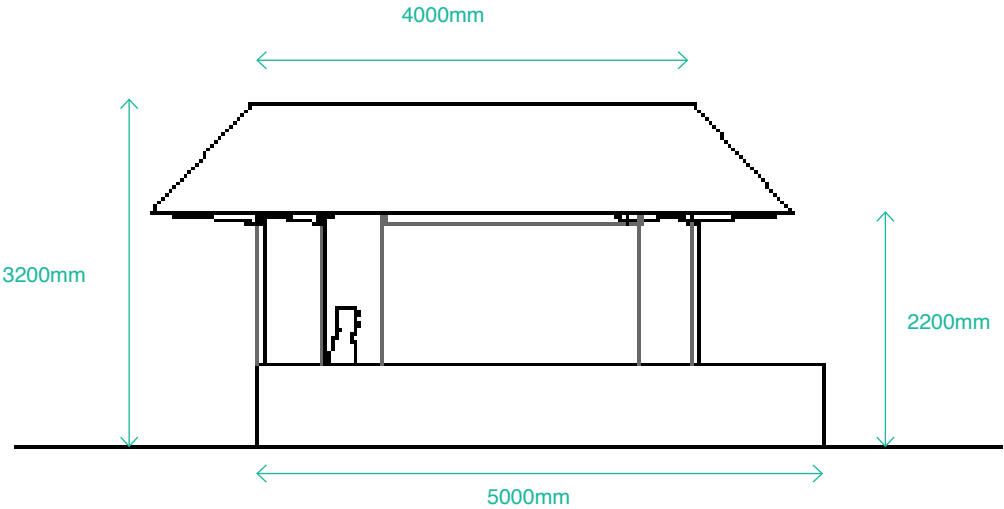
1. Dimensions in mm, do not scale.
2. Dimensions are approximate.
3. Form will be refined during development.

This document is the property of 'Urban Radicals LLP' and is not to be used or reproduced in whole or in part without written permission.

Drawn by:

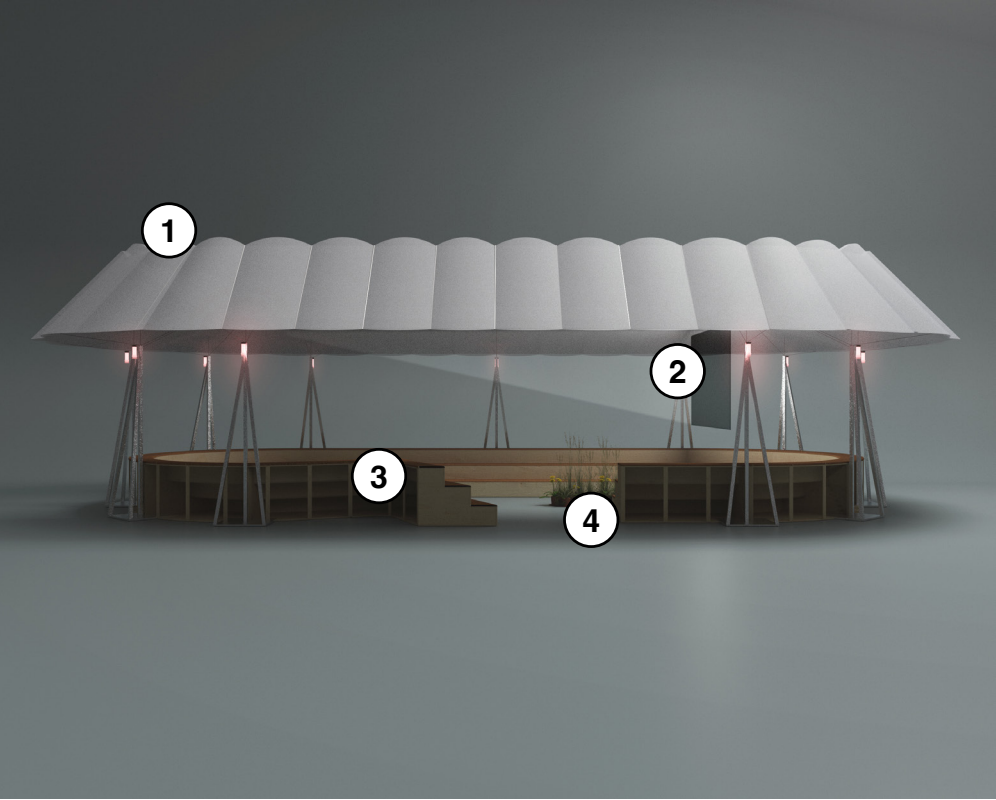
Signed off by:

LFA SQUARE MILE/ Fleet Street Quarter: Public Assembly/ Elevations

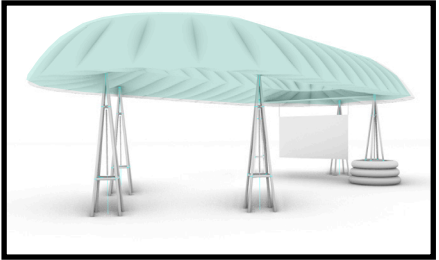


<p>U R</p>	<p> Issued to: London Festival of Architecture Date: 18.03.2024 Job name: LFA Square Mile Location: Playhouse Yard, 75 Carter Ln, London EC4V 5EP Drawing title: Assembly, Elevations Dimensions: mm Scale: 1:50 @ A3 </p>	<p> Notes: 1. Dimensions in mm, do not scale. 2. Dimensions are approximate. 3. Form will be refined during development. </p>	<p> Drawn by: Signed off by: </p>
-------------------	---	---	---

LFA SQUARE MILE/ Fleet Street Quarter: Public Assembly/ Materials



1. projection screen (retractable)



2. roof (inflatable, PVC)



3. seating (plywood)



4. planting



U R

Issued to: London Festival of Architecture
 Date: 18.03.2024
 Job name: LFA Square Mile
 Location: Playhouse Yard, 75 Carter Ln, London EC4V 5EP
 Drawing title: Assembly, Isometric
 Dimensions: mm
 Scale: N/A

Notes:
 1. Dimensions in mm, do not scale.
 2. Dimensions are approximate.
 3. Form will be refined during development.

Drawn by:
 Signed off by:

Thank you